



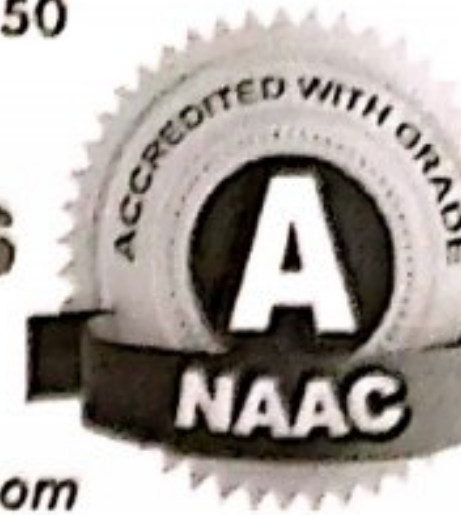
Regd. No. 732/2006

Mobile: 8499831950

# PRATISHTA INSTITUTE OF PHARMACEUTICAL SCIENCES

(Accredited by NAAC with 'A' grade, Approved by AICTE PCI New Delhi, Affiliated to JNTUH and SBTET, TS)  
Duraipally (V), Chivmela (M), Suryapet (Dist.) Telangana-508214

Website: [www.pratisthapharmacy.in](http://www.pratisthapharmacy.in), E-mail: [pratishtha.pharmacy@yahoo.com](mailto:pratishtha.pharmacy@yahoo.com)



## Teacher's Feedback

Questions	Excellent	Very Good	Good
1. Structure of curriculum framed for the entire program	11	13	6
2. Appropriateness of the sequences of the course provided in the curriculum	15	12	3
3. Depth of the syllabus for the course in relation to the competencies expected by industry's current global scenarios	13	13	4
4. Adequateness of textbooks and reference books mentioned for the courses	13	15	2
5. Rate the potential of students in understanding the course objectives	13	10	7
6. Syllabus content for the courses in terms of burden on students	13	15	2
7. Experiment list in stimulating the interest of students in the subject	15	14	1
8. Contribution of the courses in terms of professional core area	14	12	4
9. Curriculum helps in building entrepreneurial motives which helps to the students for starting their projects	8	10	12
10. Rate the opportunities for employment and entrepreneurship	10	15	5



Scanned with OKEN Scanner





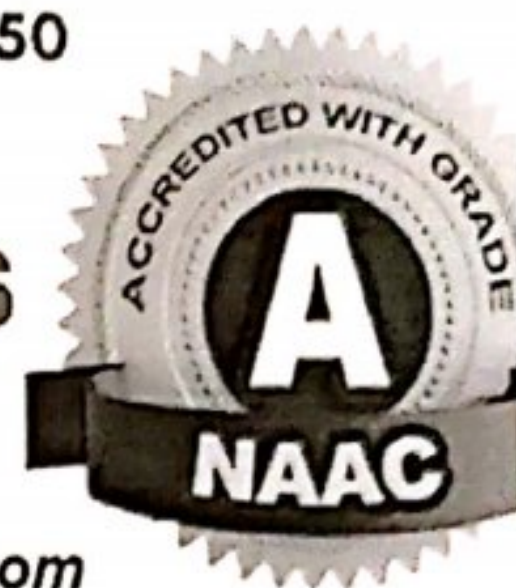
Regd. No. 732/2006

Mobile: 8499831950

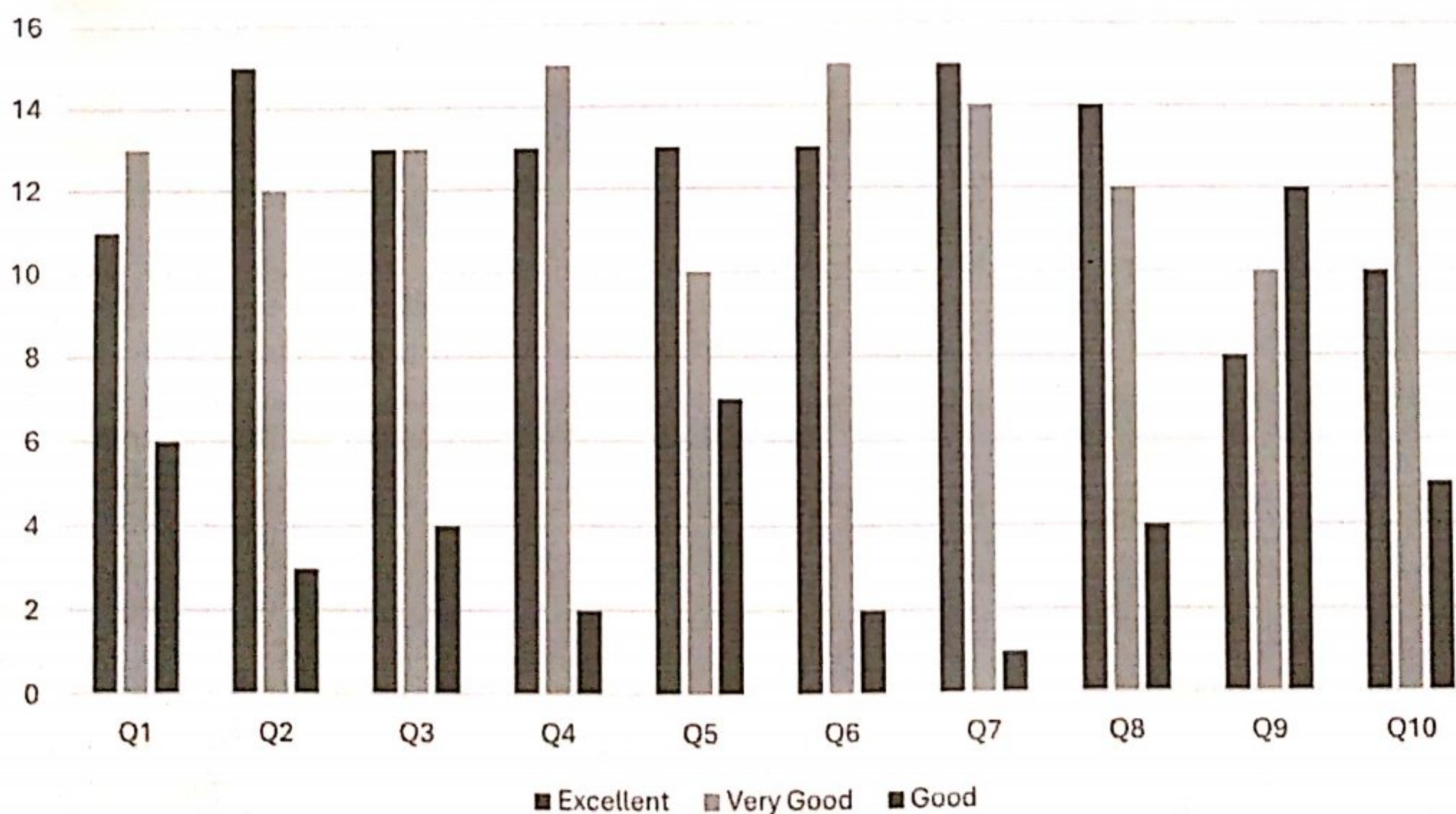
# PRATISHTA INSTITUTE OF PHARMACEUTICAL SCIENCES

(Accredited by NAAC with 'A' grade, Approved by AICTE PCI New Delhi, Affiliated to JNTUH and SBTET, TS)  
Durajpally (V), Chivmela (M), Suryapet (Dist.) Telangana-508214

Website: [www.pratishtapharmacy.in](http://www.pratishtapharmacy.in), E-mail: [pratishta.pharmacy@yahoo.com](mailto:pratishta.pharmacy@yahoo.com)



## Teacher's Feedback



Scanned with OKEN Scanner





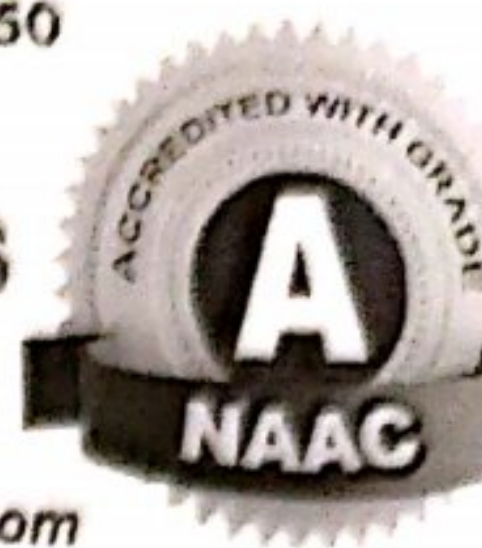
Regd. No. 732/2006

Mobile: 8499831950

# PRATISHTA INSTITUTE OF PHARMACEUTICAL SCIENCES

(Accredited by NAAC with 'A' grade, Approved by AICTE PCI New Delhi, Affiliated to JNTUH and SBTET, TS)  
Durejipally (V), Chivmela (M), Suryapet (Dist.) Telangana-508214

Website: [www.pratishtapharmacy.in](http://www.pratishtapharmacy.in), E-mail: [pratishta.pharmacy@yahoo.com](mailto:pratishta.pharmacy@yahoo.com)



## Student's Feedback

Questions	Excellent	Very Good	Good
1. How challenging was the syllabus offered by the courses	30	40	10
2. Appropriateness of the sequences of the course provided in the curriculum	20	45	15
3. Depth of the syllabus for the course in relation to the competencies expected by industry's current global scenarios	42	26	12
4. Adequateness of textbooks and reference books mentioned for the courses	20	47	13
5. Syllabus content for the courses in terms of burden on students	32	32	16
6. The design of the courses in terms of extra learning or self-learning	30	41	9
7. Rate the flexibility in choosing the electives in relation to technology advancements	45	30	5
8. Rate the percentage of the courses offering LAB components	42	26	12
9. Rate the opportunities in the college for research activities	32	37	11
10. How do you rate transparency of the evaluation system	40	30	10



Scanned with OKEN Scanner



Regd. No. 732/2006

Regd. No. 732/2006

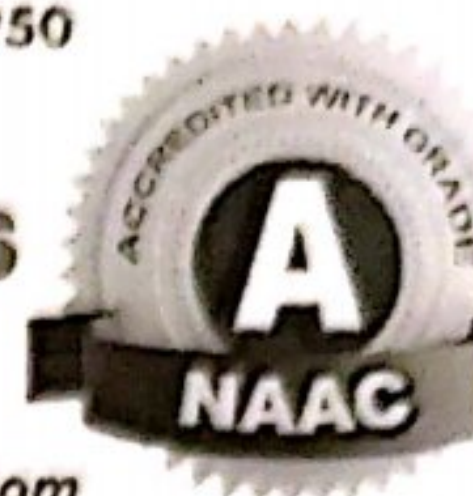
Mobile: 8499831950



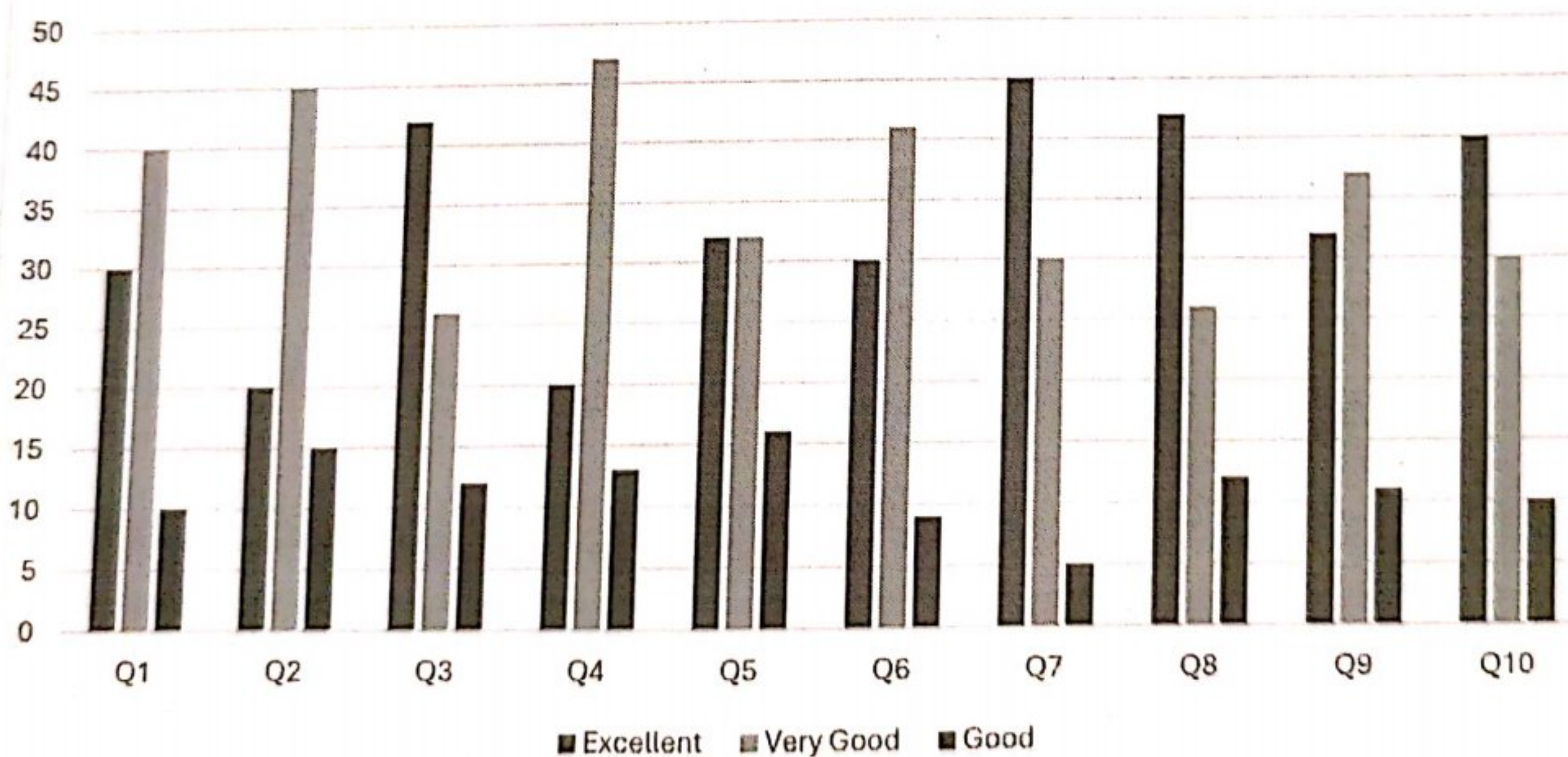
# PRATISHTA INSTITUTE OF PHARMACEUTICAL SCIENCES

(Accredited by NAAC with 'A' grade, Approved by AICTE PCI New Delhi, Affiliated to JNTUH and SBTET, TS)  
Durgapally (V), Chivmela (M), Suryapet (Dist.) Telangana-508214

Website: [www.pratishtapharmacy.in](http://www.pratishtapharmacy.in), E-mail: [pratishta.pharmacy@yahoo.com](mailto:pratishta.pharmacy@yahoo.com)



## Student's Feedback



Scanned with OKEN Scanner





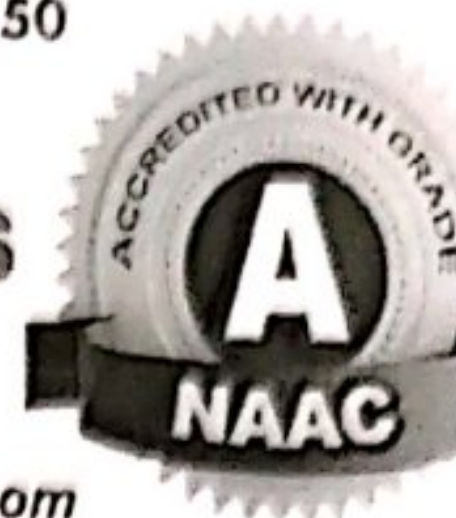
Regd. No. 732/2006

Mobile: 8499831950

# PRATISHTA INSTITUTE OF PHARMACEUTICAL SCIENCES

(Accredited by NAAC with 'A' grade, Approved by AICTE PCI New Delhi, Affiliated to JNTUH and SBTET, TS)  
Duraipally (V), Chivmela (M), Suryapet (Dist.) Telangana-508214

Website: [www.pratisthapharmacy.in](http://www.pratisthapharmacy.in), E-mail: [pratishta.pharmacy@yahoo.com](mailto:pratishta.pharmacy@yahoo.com)



## Alumni's Feedback

Questions	Excellent	Very Good	Good
1. Adequateness of courses offered in the program	15	13	2
2. Sufficiency of the syllabus to bridge the gap between academics and industry	13	10	7
3. Rate the experiential learning of the courses	13	15	2
4. The skills acquired from the curriculum to face the industry challenges/requirements	15	14	1
5. The institute's laboratory and equipment adequateness for practical exposure	14	12	4
6. Rate the offering of electives in relation to technology advancements	12	15	3
7. The design of the courses in terms of extra learning or self-learning	14	15	1
8. Training and placements cell in getting ample placements opportunities	11	13	6
9. Rate the competence and support offered by the teachers	13	14	3
10. Institute's support and contribution for the overall development of students	13	13	4



Scanned with OKEN Scanner



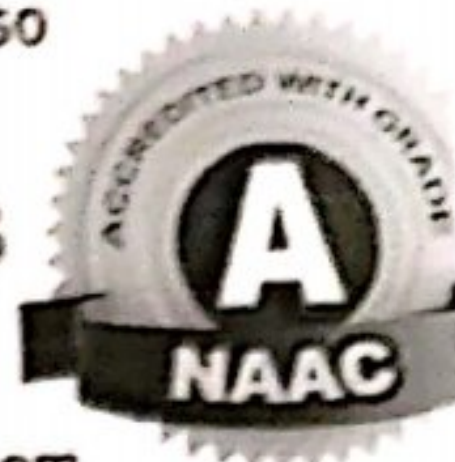


Regd. No. 732/2006

# PRATISHTA INSTITUTE OF PHARMACEUTICAL SCIENCES

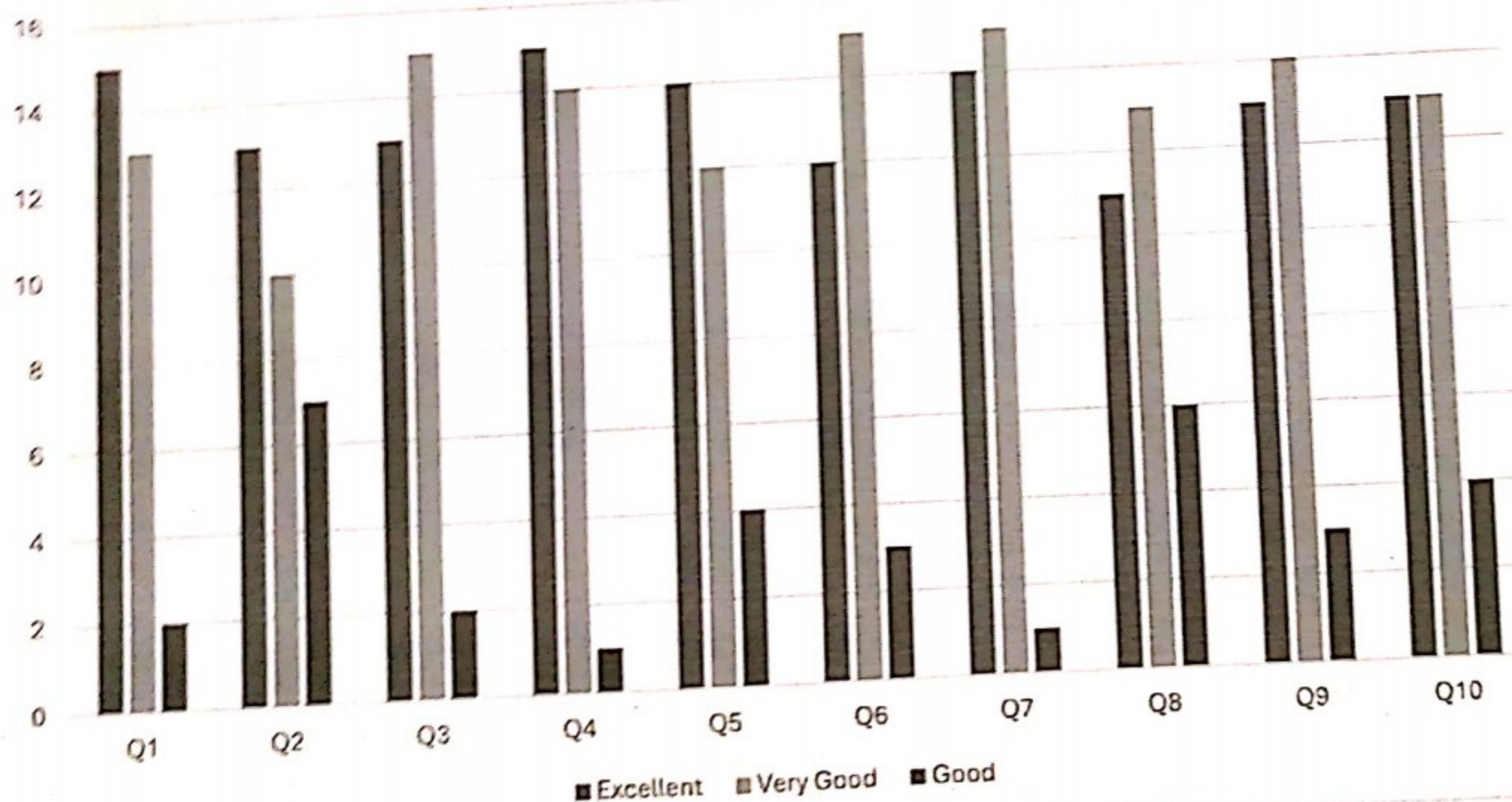
(Accredited by NAAC with 'A' grade, Approved by AICTE PCI New Delhi, Affiliated to JNTUH and SBTET, TS)  
Dursipally (V), Chimmala (M), Suryapet (Dist.) Telangana-508214

Website: [www.pratisthapharmacy.in](http://www.pratisthapharmacy.in), E-mail: [pratishtha.pharmacy@yahoo.com](mailto:pratishtha.pharmacy@yahoo.com)



Mobile: 8499831950

## Alumni's Feedback



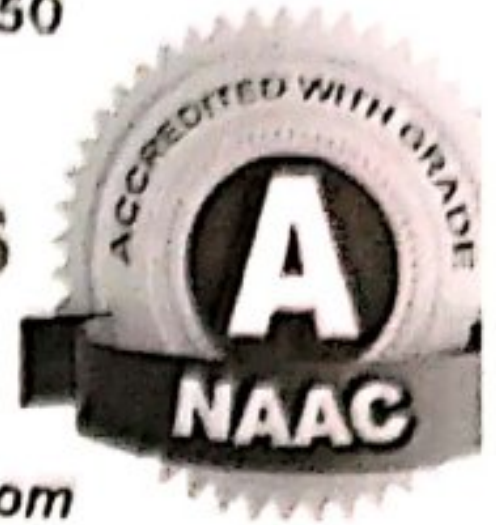




# PRATISHTA INSTITUTE OF PHARMACEUTICAL SCIENCES

(Accredited by NAAC with 'A' grade, Approved by AICTE PCI New Delhi, Affiliated to JNTUH and SBTET, TS)  
Duraipally (V), Chivmela (M), Suryapet (Dist.) Telangana-508214

Website: [www.pratishtapharmacy.in](http://www.pratishtapharmacy.in), E-mail: [pratishta.pharmacy@yahoo.com](mailto:pratishta.pharmacy@yahoo.com)



## Employer's Feedback

Questions	Excellent	Very Good	Good
1. How do you rate relevance of the courses in relation to the program?	12	3	5
2. How do you rate the sufficiency of the courses related to industry that are included in the program?	13	2	5
3. How do you rate the competencies/outcomes in relation to the course content?	10	8	2
4. How do you rate the relevance of the topics to the industry?	16	2	2
5. Rate the offering of the in relation to the specialization streams?	10	9	1
6. How do you rate the applicability of the domains and the tools used for designing the experiments in terms of existing practices in the industry?	9	7	4
7. How do you rate the experiments in terms of their relevance to the real-life application?	9	8	3
8. How do you rate the experiments in terms of their relevance to the real-life application?	4	10	6
9. How do you rate the proficiency of our students working with you?	10	3	7
10. What other courses that you suggest to be included in the curriculum?	13	5	2





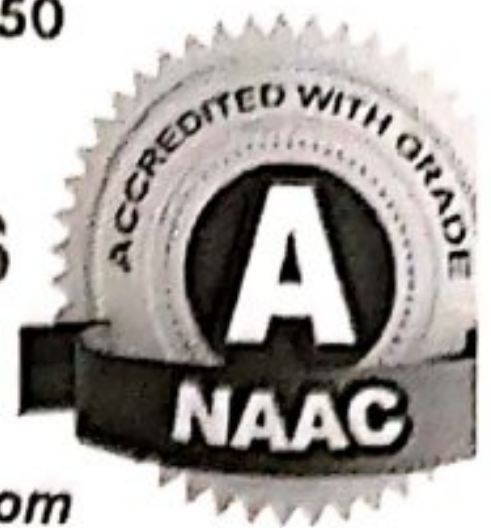
Regd. No. 732/2006

Mobile: 8499831950

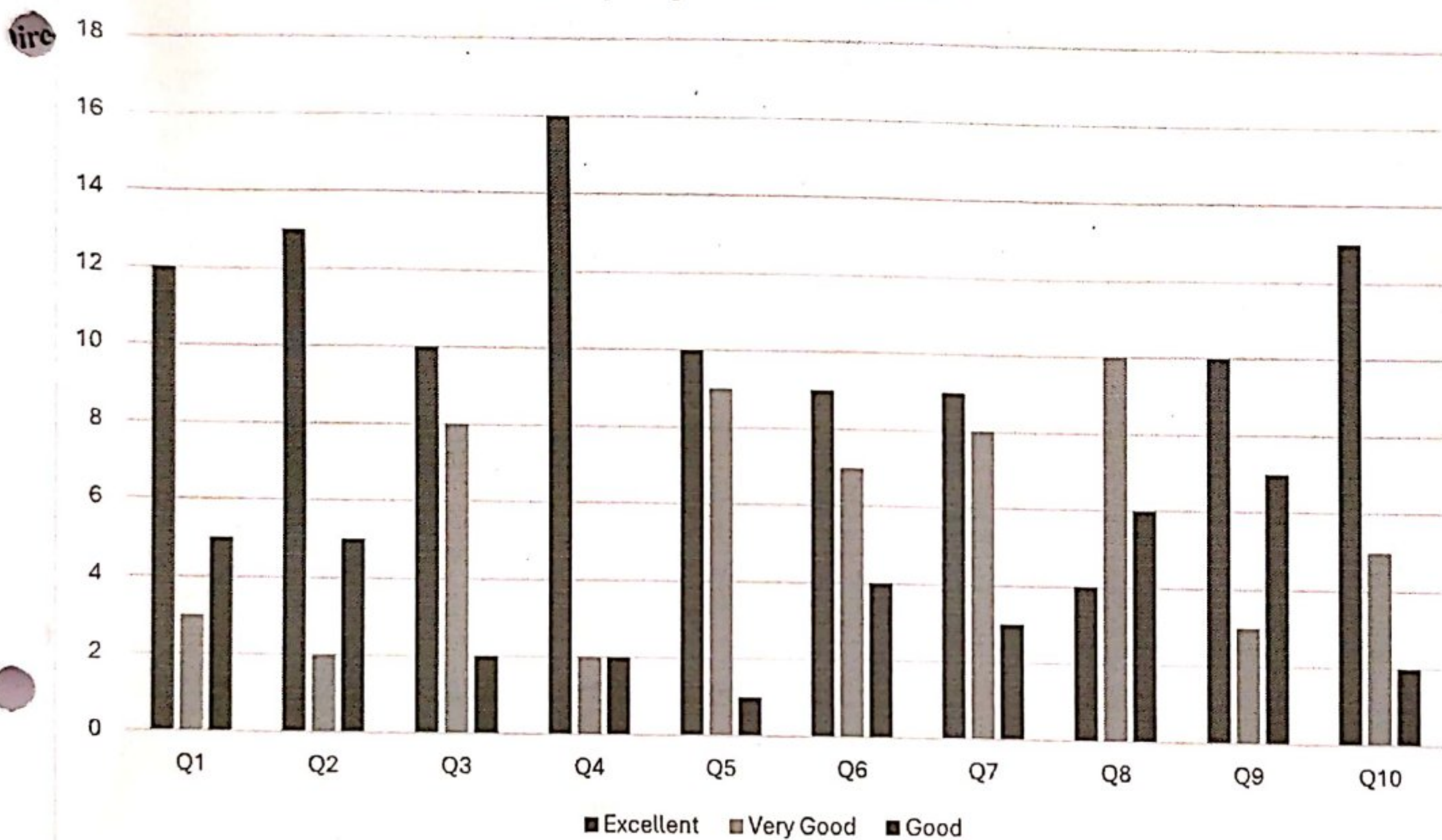
# PRATISHTA INSTITUTE OF PHARMACEUTICAL SCIENCES

(Accredited by NAAC with 'A' grade, Approved by AICTE PCI New Delhi, Affiliated to JNTUH and SBTET, TS)  
Duraipally (V), Chivmela (M), Suryapet (Dist.) Telangana-508214

Website: [www.pratishtapharmacy.in](http://www.pratishtapharmacy.in), E-mail: [pratishta.pharmacy@yahoo.com](mailto:pratishta.pharmacy@yahoo.com)



## Employer's Feedback



Scanned with OKEN Scanner

Scanned with OKEN Scanner



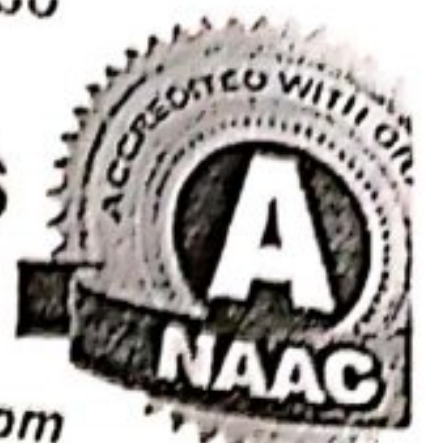


Regd. No. 732/2006

# PRATISHTA INSTITUTE OF PHARMACEUTICAL SCIENCES

(Accredited by NAAC with 'A' grade, Approved by AICTE PCI New Delhi, Affiliated to JNTUH and SBTET, TG)  
Durgapally (V), Chivmela (M), Suryapet (Dist.) Telangana-508214

Website: [www.pratishthapharmacy.in](http://www.pratishthapharmacy.in), E-mail: [pratishtha.pharmacy@yahoo.com](mailto:pratishtha.pharmacy@yahoo.com)



## TEACHERS' FEEDBACK A.Y: 2023-24

Name of the Teacher : D. Gunasheela Department department of Pharmaceutics

Designation : Asst. Professor

This questionnaire is intended to collect information for quality improvement of the programme/institution

### Directions:

For each item, please indicate your level of satisfaction with the following statement by choosing between 1 and 5. (1- Excellent, 2- Very good, 3- Good, 4- Average, 5- poor)

S. No	Curriculum, teaching, learning and evaluation	1	2	3	4	5
1	Structure of curriculum framed for the entire program	✓				
2	Appropriateness of the sequences of the course provided in the curriculum	✓				
3	Depth of the syllabus for the course in relation to the competencies expected by industry's current global scenarios		✓			
4	Adequateness of textbooks and reference books mentioned for the courses	✓				
5	Rate the potential of students in understanding the course objectives		✓			
6	Syllabus content for the courses in terms of burden on students		✓			
7	Experiment list in stimulating the interest of students in the subject	✓				
8	Contribution of the courses in terms of professional core area		✓			
9	Curriculum helps in building entrepreneurial motives which helps to the students for starting their projects		✓			
10	Rate the opportunities for employment and entrepreneurship		✓			
	TOTAL					

Any other suggestions: \_\_\_\_\_

Date: 16/3/2024

Signature



Scanned with OKEN Scanner

Scanned with OKEN Scanner





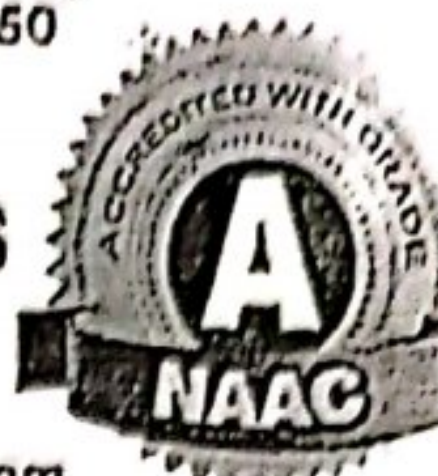
Regd. No. 732/2006

Mobilo: 8499831950

# PRATISHTA INSTITUTE OF PHARMACEUTICAL SCIENCES

(Accredited by NAAC with 'A' grade, Approved by AICTE PCI New Delhi, Affiliated to JNTUH and GNTET, TS)  
Durnipally (V), Chivmela (M), Suryapet (Dist.) Telangana-508214

Website: [www.pratishthapharmacy.in](http://www.pratishthapharmacy.in), E-mail: [pratishtha.pharmacy@yahoo.com](mailto:pratishtha.pharmacy@yahoo.com)



## STUDENTS' FEEDBACK ON CURRICULUM (2023-24)

Name of the Student: Ch. Ishwarya

Regd.no: 2302120013

Programme/Semester: B. pharm I-II

This questionnaire is intended to collect information for quality improvement of the  
programme/institution

### Directions:

For each item, please indicate your level of satisfaction with the following statement by choosing  
between 1 and 5. (1- Excellent, 2- Very good, 3- Good, 4- Average, 5- poor)

S. No	Teaching, learning and evaluation	1	2	3	4	5
1	How challenging was the syllabus offered by the courses	✓				
2	Appropriateness of the sequences of the course provided in the curriculum			✓		
3	Depth of the syllabus for the course in relation to the competencies expected by industry's current global scenarios	✓				
4	Adequateness of textbooks and reference books mentioned for the courses		✓			
5	Syllabus content for the courses in terms of burden on students	✓				
6	The design of the courses in terms of extra learning or self-learning	✓				
7	Rate the flexibility in choosing the electives in relation to technology advancements		✓			
8	Rate the percentage of the courses offering LAB components	✓				
9	Rate the opportunities in the college for research activities	✓				
10	How do you rate transparency of the evaluation system		✓			
	TOTAL					

Any other suggestions: \_\_\_\_\_

Date: 26/04/24

Signature

Ch. Ishwarya



Scanned with OKEN Scanner





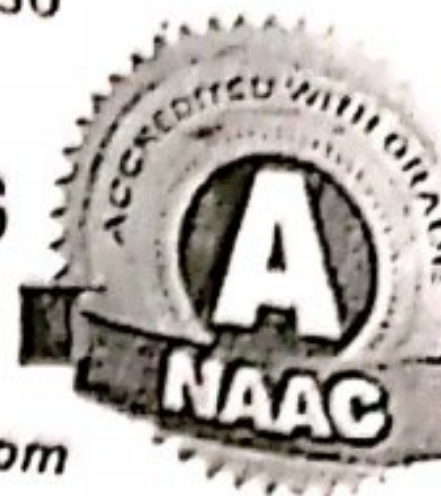
Regd. No. 732/2006

Mobile: 8499831950

# PRATISHTA INSTITUTE OF PHARMACEUTICAL SCIENCES

(Accredited by NAAC with 'A' grade, Approved by AICTE PCI New Delhi, Affiliated to JNTUH and SSTET, TS)  
Durgapally (V), Chumala (M), Suryapet (Dist.) Telangana-508214

Website: [www.pratishthapharmacy.in](http://www.pratishthapharmacy.in), E-mail: [pratishtha.pharmacy@yahoo.com](mailto:pratishtha.pharmacy@yahoo.com)



## STUDENTS' FEEDBACK ON CURRICULUM (2023-24)

Name of the Student: R. MadhumathiRegd.no: 22CK1T0005Programme/Semester: Pharm.D 8 year

This questionnaire is intended to collect information for quality improvement of the programme/institution

### Directions:

For each item, please indicate your level of satisfaction with the following statement by choosing between 1 and 5. (1- Excellent, 2- Very good, 3- Good, 4- Average, 5- poor)

S. No	Teaching, learning and evaluation	1	2	3	4	5
1	How challenging was the syllabus offered by the courses			✓		
2	Appropriateness of the sequences of the course provided in the curriculum		✓			
3	Depth of the syllabus for the course in relation to the competencies expected by industry's current global scenarios	✓				
4	Adequateness of textbooks and reference books mentioned for the courses		✓			
5	Syllabus content for the courses in terms of burden on students	✓				
6	The design of the courses in terms of extra learning or self-learning			✓		
7	Rate the flexibility in choosing the electives in relation to technology advancements	✓				
8	Rate the percentage of the courses offering LAB components	✓				
9	Rate the opportunities in the college for research activities	✓				
10	How do you rate transparency of the evaluation system			✓		
	TOTAL					

Any other suggestions: \_\_\_\_\_

Date: 08/08/24

R. Madhumathi  
Signature



Scanned with OKEN Scanner



# PRATISHTA INSTITUTE OF PHARMACEUTICAL SCIENCES

(Accredited by NAAC with 'A' grade, Approved by AICTE FCI New Delhi, Affiliated to JNTU and SSTET, TS)  
Durgapally (V), Chivmela (M), Suryapet (Dist.) Telangana-508214

Website: [www.pratishtapharmacy.in](http://www.pratishtapharmacy.in), E-mail: [pratishta.pharmacy@yahoo.com](mailto:pratishta.pharmacy@yahoo.com)



## STUDENTS' FEEDBACK ON CURRICULUM (2023-24)

Name of the Student: Mr. Meghana

Regd.no: 22CK1R0020

Programme/Semester: B. Pharm - II<sup>nd</sup> Year (II - II)

This questionnaire is intended to collect information for quality improvement of the programme/institution

### Directions:

For each item, please indicate your level of satisfaction with the following statement by choosing between 1 and 5. (1- Excellent, 2- Very good, 3- Good, 4- Average, 5- poor)

S. No	Teaching, learning and evaluation	1	2	3	4	5
1	How challenging was the syllabus offered by the courses		✓			
2	Appropriateness of the sequences of the course provided in the curriculum		✓			
3	Depth of the syllabus for the course in relation to the competencies expected by industry's current global scenarios	✓				
4	Adequateness of textbooks and reference books mentioned for the courses	✓				
5	Syllabus content for the courses in terms of burden on students	✓				
6	The design of the courses in terms of extra learning or self-learning		✓			
7	Rate the flexibility in choosing the electives in relation to technology advancements	✓				
8	Rate the percentage of the courses offering LAB components	✓				
9	Rate the opportunities in the college for research activities	✓				
10	How do you rate transparency of the evaluation system	✓				
	<b>TOTAL</b>					

Any other suggestions: \_\_\_\_\_

Mr. Meghana  
Signature

Date: 19/4/24







Regd. No. 732/2006

Mobilo: 8499831950

# PRATISHTA INSTITUTE OF PHARMACEUTICAL SCIENCES

(Accredited by NAAC with 'A' grade, Approved by AICTE PCI New Delhi, Affiliated to JNTUH and SOTET, TS)  
Durgipally (V), Chimmela (M), Suryapet (Dist.) Telangana-500214

Website: [www.pratishtaparmacy.in](http://www.pratishtaparmacy.in), E-mail: [pratishta.pharmacy@yahoo.com](mailto:pratishta.pharmacy@yahoo.com)



## STUDENTS' FEEDBACK ON CURRICULUM (2023-24)

Name of the Student: N. Meghana

Regd.no: 22CK1R0020

Programme/Semester: B. Pharm - II<sup>nd</sup> Year (II - II)

This questionnaire is intended to collect information for quality improvement of the programme/institution

### Directions:

For each item, please indicate your level of satisfaction with the following statement by choosing between 1 and 5. (1- Excellent, 2- Very good, 3- Good, 4- Average, 5- poor)

S. No	Teaching, learning and evaluation	1	2	3	4	5
1	How challenging was the syllabus offered by the courses		✓			
2	Appropriateness of the sequences of the course provided in the curriculum		✓			
3	Depth of the syllabus for the course in relation to the competencies expected by industry's current global scenarios	✓				
4	Adequateness of textbooks and reference books mentioned for the courses	✓				
5	Syllabus content for the courses in terms of burden on students	✓				
6	The design of the courses in terms of extra learning or self-learning		✓			
7	Rate the flexibility in choosing the electives in relation to technology advancements	✓				
8	Rate the percentage of the courses offering LAB components	✓				
9	Rate the opportunities in the college for research activities	✓				
10	How do you rate transparency of the evaluation system					
	TOTAL					

Any other suggestions: \_\_\_\_\_



Scanned with OKEN Scanner



Scanned with OKEN Scanner